

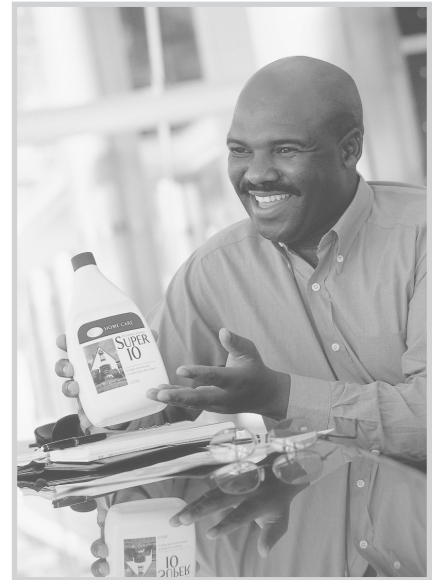
BUILDING YOUR GNLD BUSINESS IS SIMPLE & FUN!

■ *Use the Products*

■ *Talk to People*

You're already using GNLD's superior products and learning more about their benefits every day.

Your sponsor and others are helping you to realize how simple and fun it is to build a GNLD business.

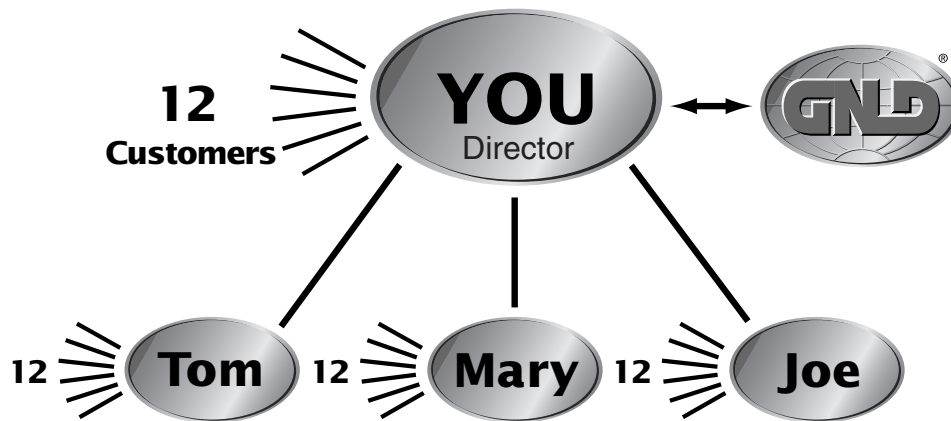


**Now all you do is help
other people to
experience GNLD.**

DIRECTOR: YOUR KEY TO SUCCESS

A GNLD Director is a Distributor who has built a business well positioned to achieve his or her goals. This simple business empowers you to build an unlimited income to realize the lifestyle of your dreams!

You're using the full range of GNLD products, you're sharing the products with other people, and you're introducing new people everyday to the GNLD opportunity. It takes about 50 good customers to build a Director-size business. To demonstrate a balanced business, we illustrate a Director Model like this:



- You have 12 customers.
 - You have introduced 3 other people into GNLD who also have 12 customers.
- Including your Distributors and yourself, you have 52 people actively involved in your GNLD network.

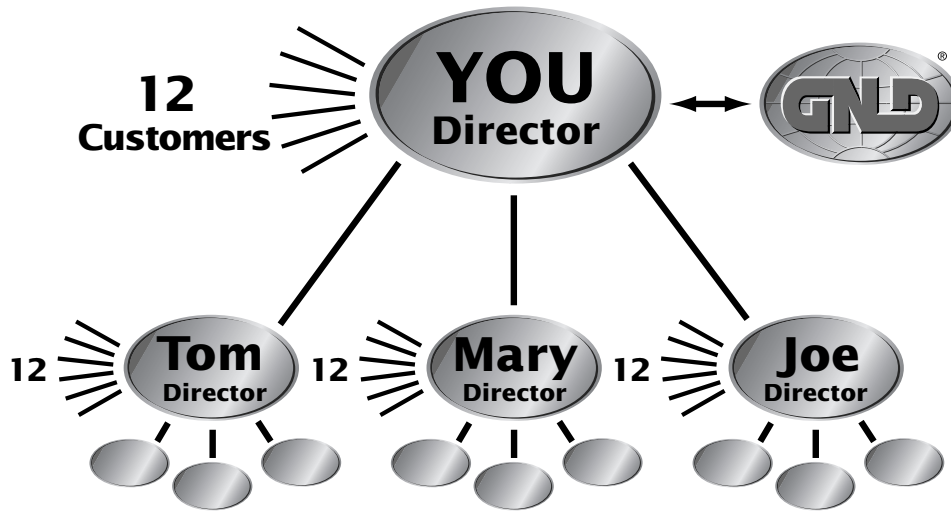
In our illustration, we assume each customer is using 100 Points worth of product. New customers may start with less than this, but regular customers often use much more. Talk to Distributors you've met and you'll find that 100 Points is a good guideline.

A Director-size business built in this way would earn approximately \$20,000 per year! You're doing Part-Time work and earning Full-Time pay!

The illustration above is designed to simplify the explanation of how a GNLD business is built. Actual average incomes for GNLD businesses of various size are highlighted on page 21.

THE POWER OF DUPLICATION

As your Distributors also build their businesses to Director-size, you double your income without doubling your work. That's the Power of Duplication!



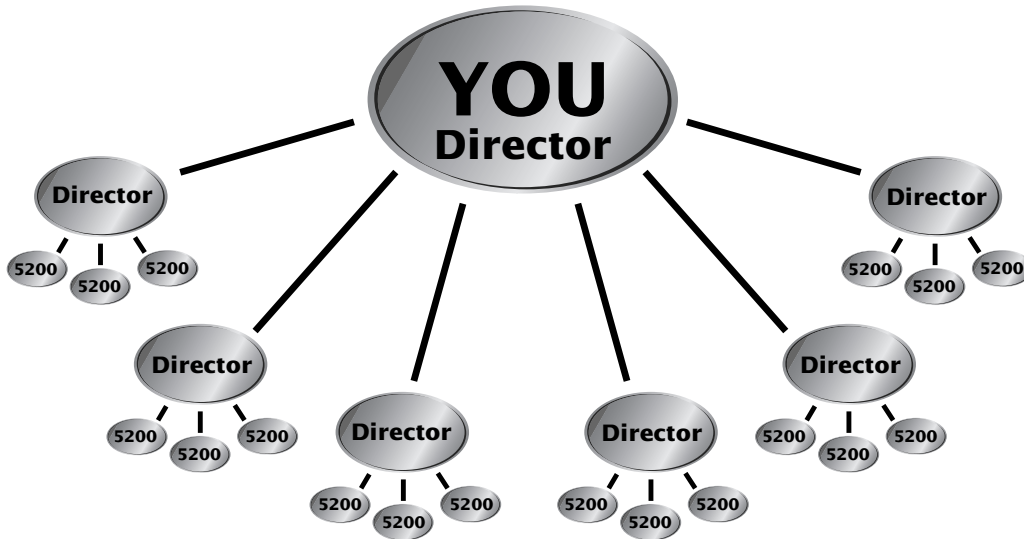
Remember that each of the Directors above has developed their own network of 50 customers, so that each of you are maintaining a Director-size business averaging approximately 5,200 Points per month.

Our illustration still shows you servicing just 12 customers directly. Realistically, Directors at this level routinely enjoy a much larger personal customer base.

A GNLD business structured like this would earn approximately \$40,000 per year!

The illustration above is designed to simplify the explanation of how a GNLD business is built. Actual average incomes for GNLD businesses of various size are highlighted on page 21.

As you continue to develop new Directors, and each of your Directors grows their own business to achieve a \$40,000 income like yours, your organization might grow to look like this:



Using the Power of Duplication, in this illustration you have now helped a total of 6 Directors to each help 3 others to achieve a Director-size business.

A GNLD business structured like this would earn approximately \$140,000 per year!

The illustration above is designed to simplify the explanation of how a GNLD business is built. Actual average incomes for GNLD businesses of various size are highlighted on page 21.